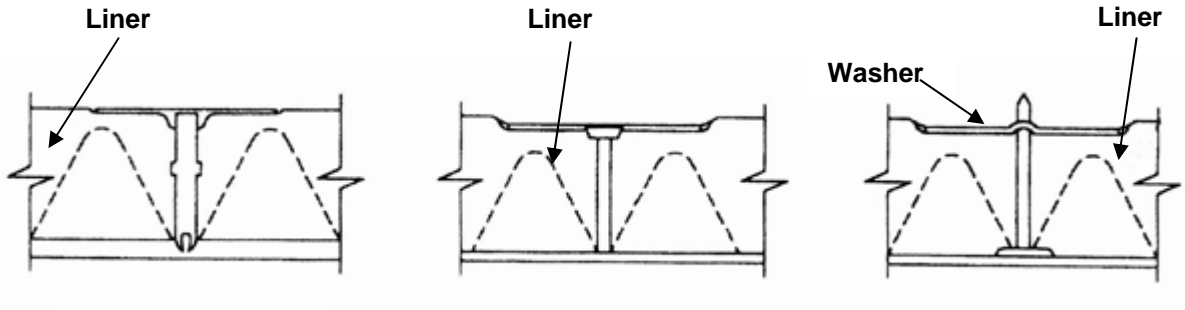




## Liner Fasteners

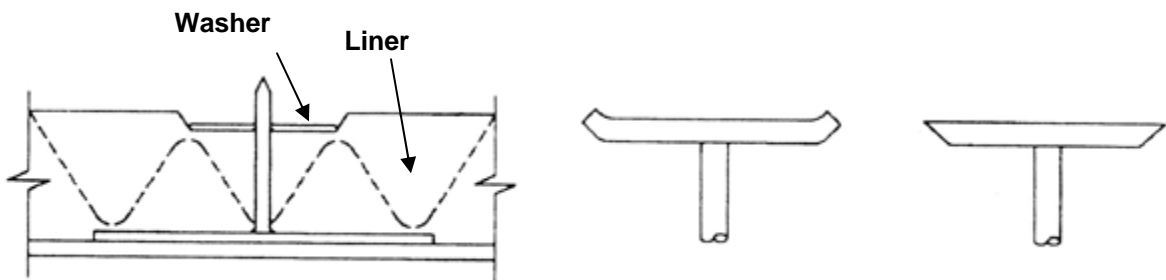
BASED ON 3<sup>rd</sup> Edition 2005 SMACNA STANDARDS



Type 1  
Clinched Pin: Integral  
Head-Impact Applied

Type 2  
Welded Pin  
Integral Head

Type 3  
Welded Pin  
Press-On Head



Type 4  
Adhered Pin  
Press-On Head

Cupped

Beveled

### Head Types

Installed pins and washers shall not compress liner more than the correct length specified for the liner thickness used.